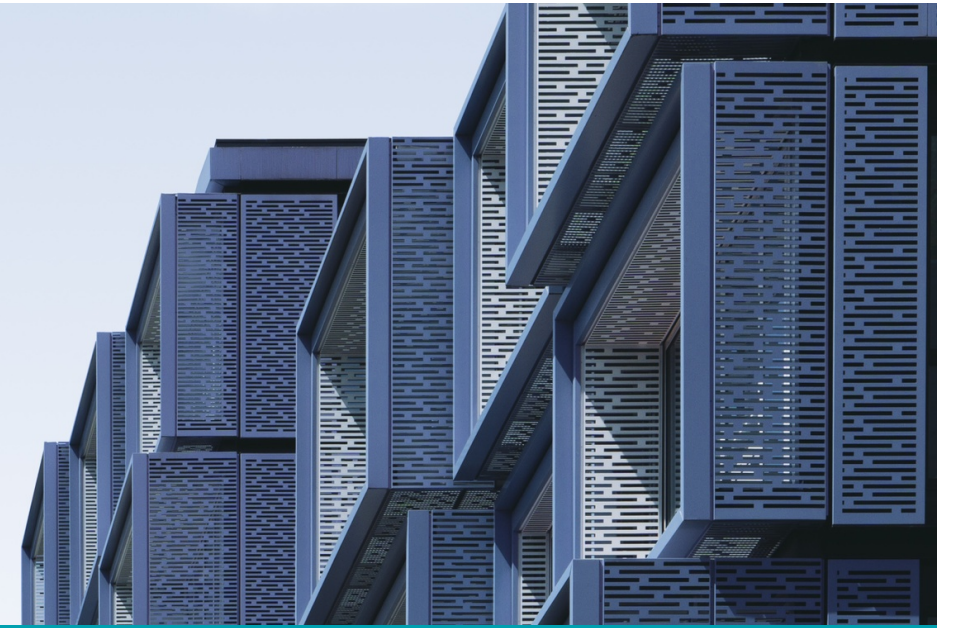


The Podular Group

"Master-Planned, Modular Centric Projects"



Collaborating with some of the Planet's Top Architects, Builders and Suppliers



Whilst Podular upholds proficiency
in innovation and compliance, we
value the contributions of our
local professional associates

Rapid, Adaptive, Practical

Creators of
Master Planned,
Modular Centric
Ventures

Humanitarian,
Commercial,
Leisure and
Workforce
Accommodations



Seamless, Rapid Deployment

Remote Worksites, Disaster- Stricken Zones, Military Operations and Efficient Personnel Management

Live



- **Short, Mid and Long term:** Hotels and Urban Mini-Suite accommodations
- **Emergency Shelters:** Rapid deployment for relief and Refugee Housing: Temporary and adaptable housing for displaced populations.

Work



- **Commercial:** Office and work environments.
- **Workforce:** Solutions for remote worksites.
- **Multi-Use:** Flexible spaces for various business needs.

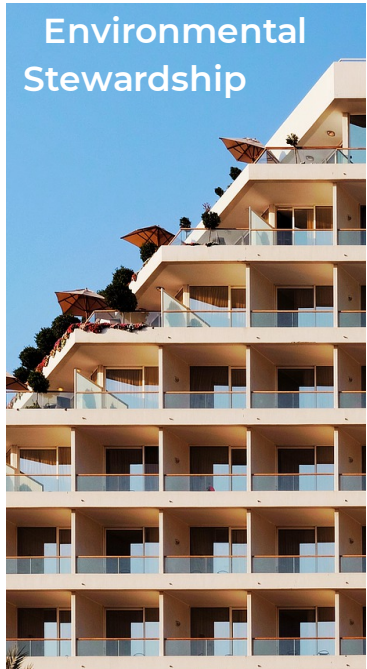
Community



- **Healthcare:** Customized modular facilities.
- **Disability and Mental Health:** Supportive living solutions.
- **Offices, Education, and Residential:**

Our 6 Core Principles and Objectives - in line with UN SDGs

We focus on social problems, primarily homelessness, mental health, and dedication to the vulnerable.



Implementing eco-friendly practices to minimize environmental impact and contribute to climate action.



Embracing innovation as a tool to address social and environmental challenges, striving for continuous improvement.



Aligning projects with environmental, social, and economic sustainability, aiming for a lasting positive impact.



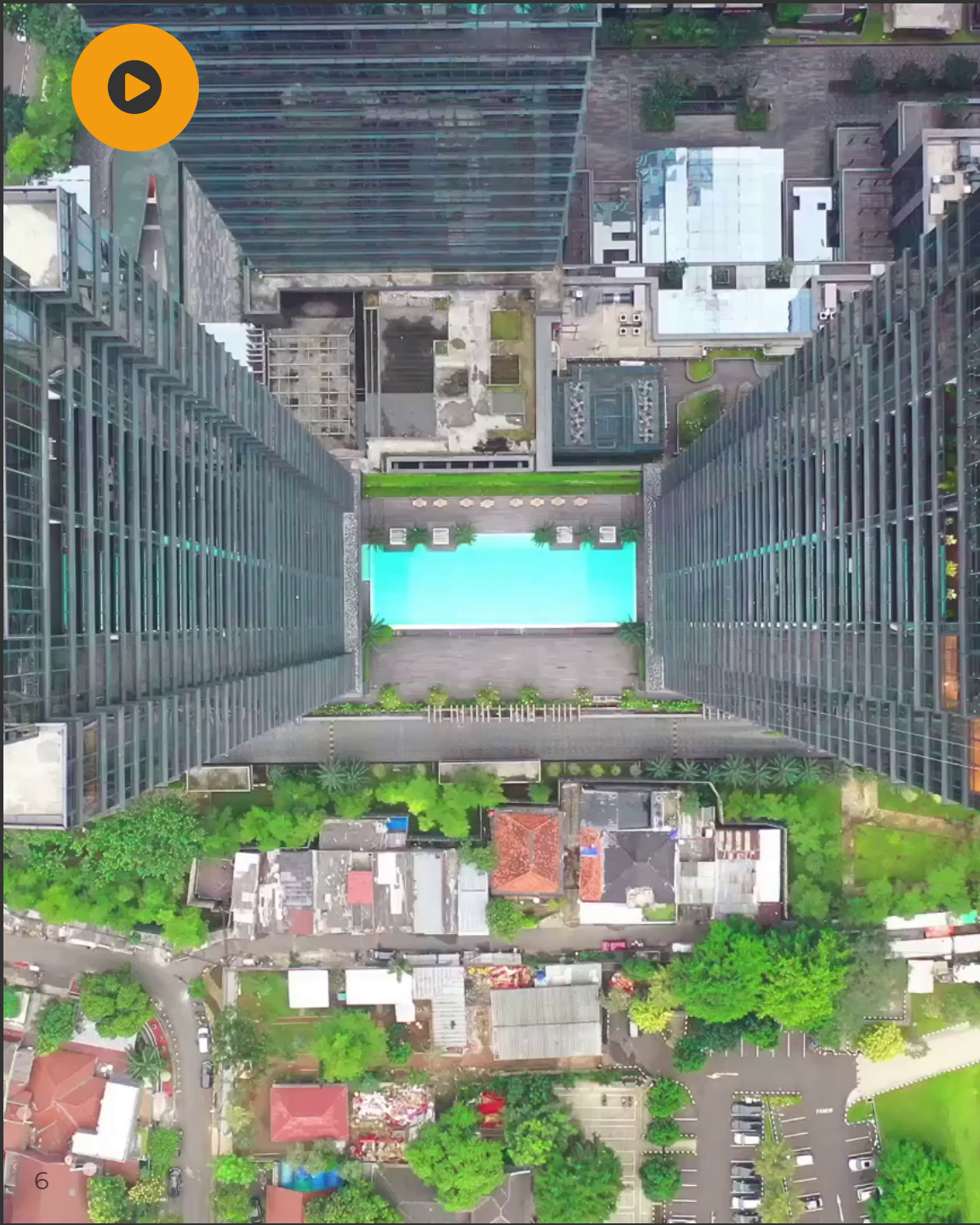
Prioritizing community well-being by engaging, listening, and responding to their needs, enhancing overall quality of life



Upholding the highest standards of integrity, ethics, and transparency in all business and project operations.



Fostering diversity and equal opportunities, ensuring fair representation and participation across all stakeholders



Resident Centric Facility Management

Pioneering Sustainable Practices Across Industries: Discover our holistic sustainability approach, spanning utility management, health, safety, maintenance, and waste treatment. With a focus on waste reduction and eco-friendly disposal, we are committed to pioneering new standards in environmentally conscious practices.

Green Energy Solutions for a Sustainable Tomorrow: Discover the future of sustainable energy with our cutting-edge water and power generation systems. Unlock a reliable source of consistent revenue while actively contributing to environmental conservation. Embrace a greener tomorrow with our advanced solutions in water and power generation.

The Podularised Showcase

Offsite production with an enhanced shipping plan that expedites cost and time.



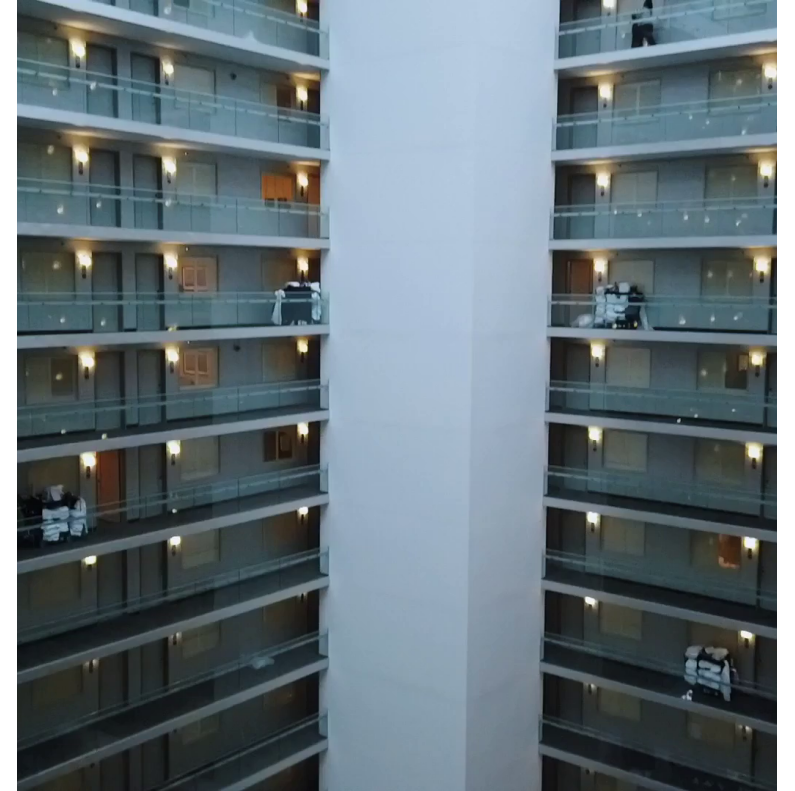
Mini Suites

Brief-stay tiny living spaces suitable for workforce, transient and pet hotels



Expandable

Short to Mid Term suitable for residential, leisure and emergency accommodations



Multi-Level

Long Term including air-space, car parks and bespoke rapid accommodations

150M
Homeless 2021
WORLD ECONOMIC FORUM

1.6B
**Lack Adequate
Housing 2015**
HABITAT

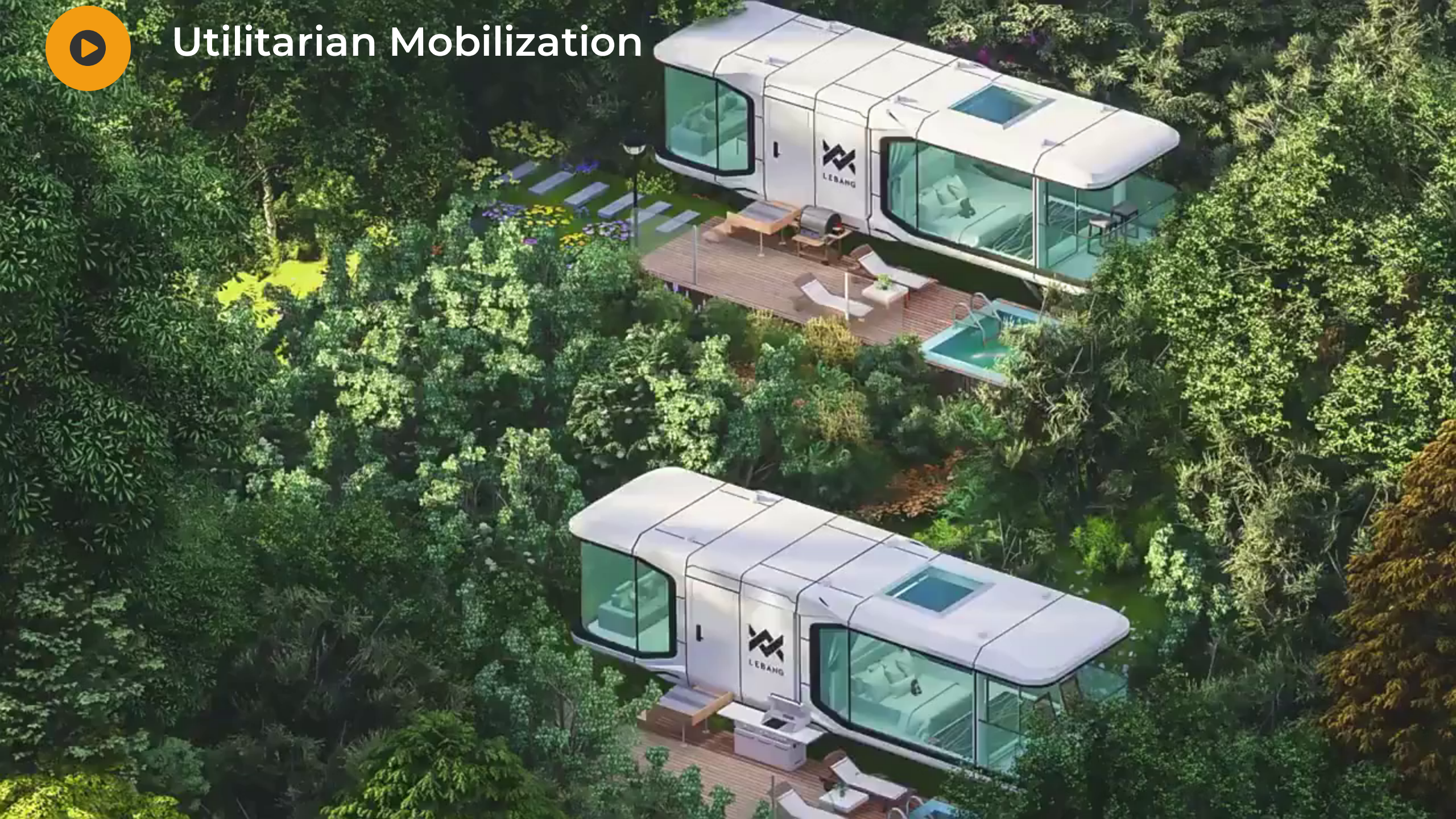
8 Billion
POTENTIAL USERS



**91% of Employers intend to Implement
a Hybrid Work Model in 2024**
Affirms the Needed Short-Term Suites near Workplaces
MCKINSEY



Utilitarian Mobilization



Ensuring Local Compliance and Standards



We follow the Management Institute's Project Realization Flow and uphold Project Management Standards

Tailored Options



Rapid factory-built products that meet unique needs!

Trade and Consumer Finance

Offering Leasing and Financing

Land and Products



Contact Us.
Terms Apply



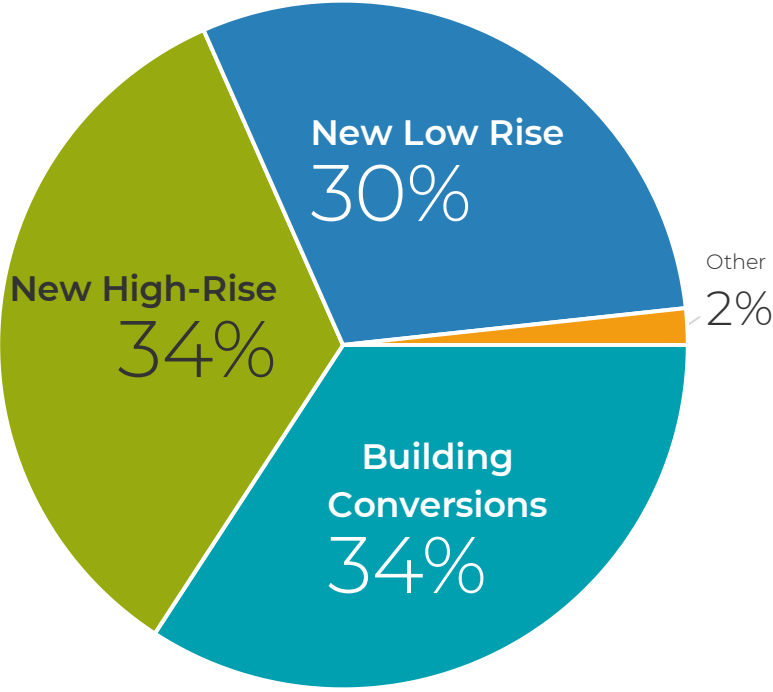
Vision and Strategy 2024-2030

Engaging in strategic Public-Private Partnerships (PPPs) and Government-to-Government (G2G) collaborations, alongside our independent projects.

This expansion reinforces our commitment to enhance hospitality standards, promote widespread accessibility, and create a lasting urban impact.

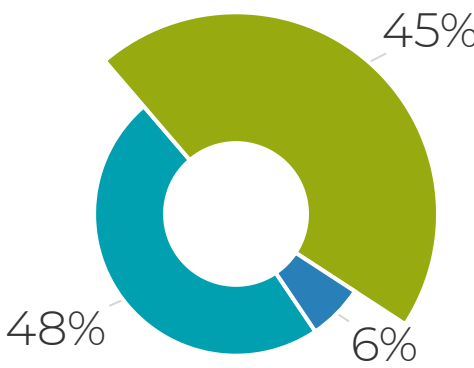
The Podular Roadmap

Aiming for 150 Facilities, equating to 18,000 Rooms



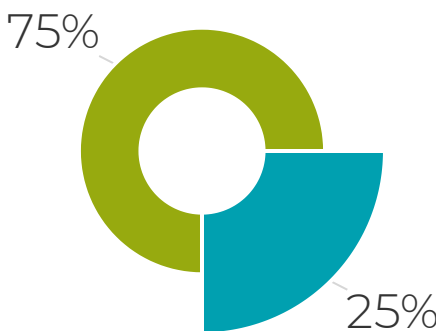
Region

- India
- SE Asia
- Oceania



Facility Tenure Type

- Leasehold
- REITs



Why get involved

Procuring sites and designs, direct-manufacturer options, and practical, high-calibre projects personalized to fit societal requirements.

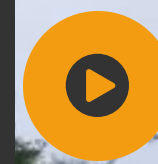
We actively participate in co-investment and financing initiatives for meaningful projects that tackle functional challenges. Our focus is on creating practical, high-quality spaces.

**Planning and
Design**

Develop

**Co-Invest
or Finance**

Collaborate with us for expert guidance, practical solutions, and optimized propositions through strategic investments.



Play Video





Our Four Main Collaborations



Asset Owners

We manage development assignments, zoning permissions, expert services, & project completion



SPV Investments

Explore how you can contribute capital or other resources into our latest Special Purpose Vehicle projects.



Contractors

We're constantly seeking competent companies offering products and services.



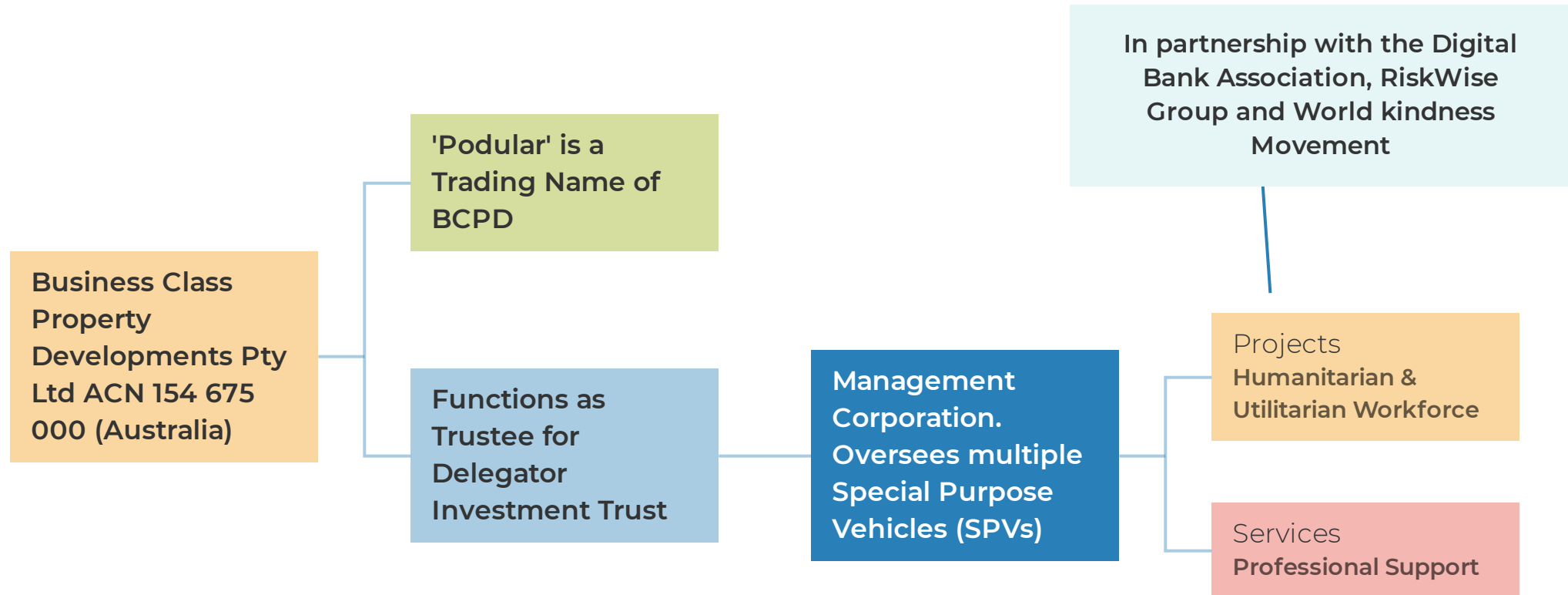
PPP's

Considering our proficiency to create influential Public Private Partnerships projects that meet community requirements, we urge you to connect



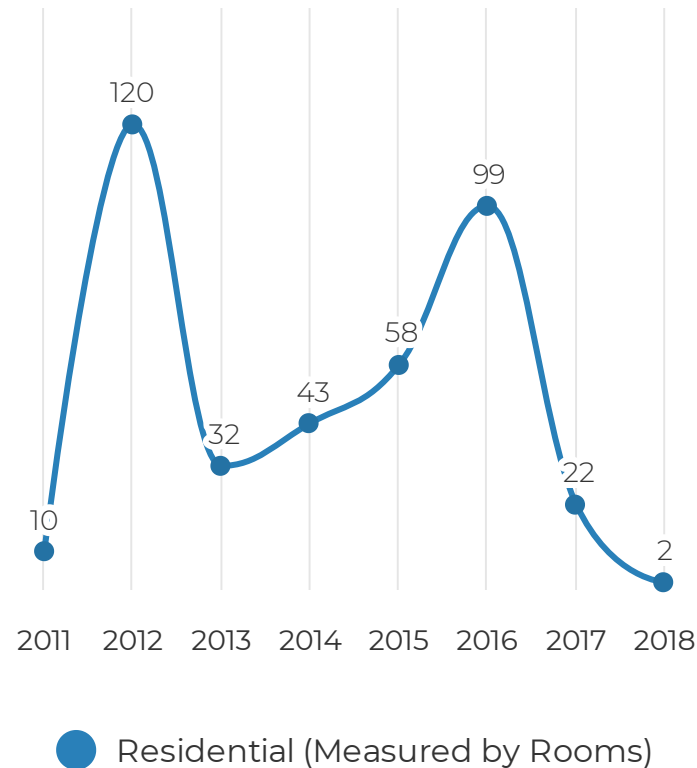
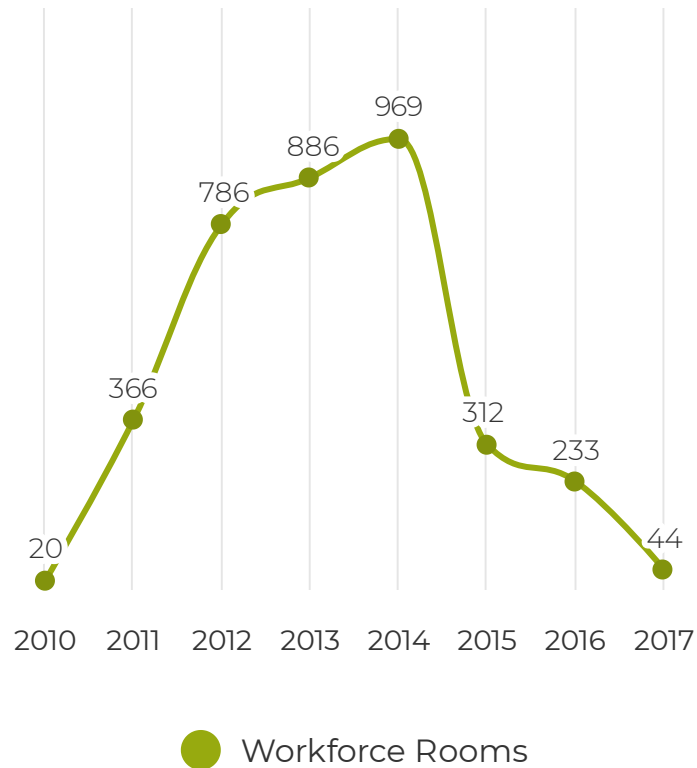
Australian Corporation - Established Since 2011

Podular™ Company Structure



Podular Projects

Our Historical Achievements



3300

Rooms Delivered

2010-2017

Decrease in
Australian activities
due to slump in
mining commodity
industry.



Rocco Pennisi

Chief Executive Officer

Rocco's professional accomplishments have been extraordinary, as he has served as the leader for 12 years.

His success is linked to his effectiveness and dependability, and he has successfully managed projects and personnel with great skill. His talents are undeniable.

He always meets expectations and puts in the effort to guarantee maximum advantage on every task. His zeal and understanding have had a remarkable influence on the crew, helping it reach new heights. Simply put, he's a vital part of the team. Rocco works to get the best outcomes from each selection, which has been displayed in the faith others have in him and the Podular Group.

Crew crew

Maintaining
operations
behind the
curtains



Karen-CFO



Nathalia -Process Eng



Maria- EA



Tim - BDO



Mathew - COO



Brisbane Factory 2012

**Former staff shown upon consent.*



Advisory Board

Michael Foxman

Michael's extensive global experience enhances the work at Podular, consistently adding value. He collaborates with governments, attracting FDI and creating job opportunities, as well as incentivizing technology transfer and innovation. His expertise includes social and economic housing, mental health, substance abuse and controlled persons' management. He also leads initiatives for Podular Group like the large-scale \$80 billion housing project in Iran, helping refugees and delivering long-term housing solutions.



Jose Lapena III

Jose's wealth of knowledge in the South East Asian real estate arena and his long-term dedication to the Podular Group's advisory board have proven his proficiency. His skillful insights into the regional industry, combined with his commitment to achievement for his customers, has earned him admiration from the team.

Where We've Featured

We cherish the display of
these accolades.

Awards relate to our team,
company and advisors
Michael Foxman.



Silicon Review "30 Most
Inspiring Leaders to
Watch 2022"



BUILT Construction
and Engineering
Magazine Awards
"2021,



Top 100 People in Real
Estate "The Top 100
Magazine Awards
2022"



Best Risk Management
Consultancy – Colorado

BUILD
Construction &
Engineering
Awards

2021-2022 Risk
Management Consultancy
of the Year".



Best Project Award.
Brisbane. 2021

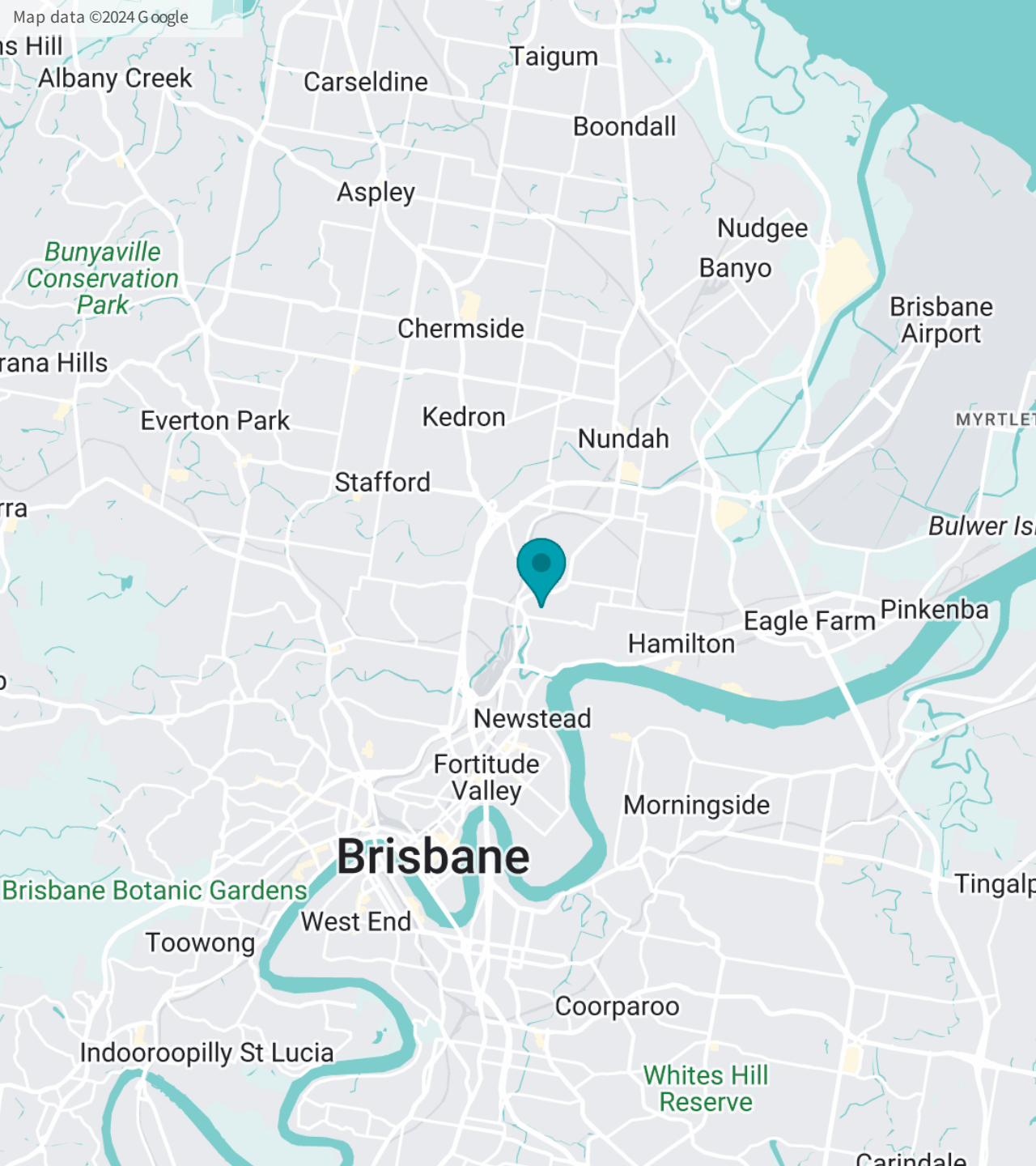
Former Clients and Partners

We take pride in showcasing these collaborators in our presentation.



RioTinto





Contact Us

Alison House, 35 Dover Street, Albion, Qld Australia

@ admin@podular.com.au

https://podular.com.au

Brisbane Office +61 (7) 3040 9019

Philippines +63 928 302 9688

CEO Direct +61 418 745 398

References: Visit our [website](https://podular.com.au) for a comprehensive examination of our vast previous and ongoing portfolio..